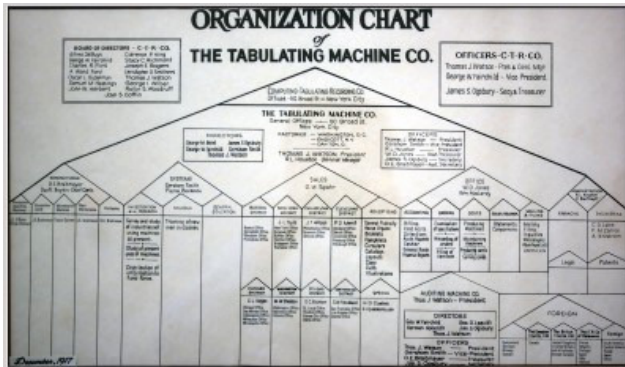


The C-T-R Co. and IBM



Provided by Dr. Mihail Sadeanu, an old IBM history investigator!

The posted picture¹ reminds me about Charles R. Flint, George W. Fairchild, Thomas J. Watson (Senior) – the greatest names in the C-T-R Co.!

In 1901, the great entrepreneur and investor Charles Ranlett Flint participated to the merge of three companies and founded the CSCA-“Computing Scale Company of America” producing scales and cheese slicers.

Then, in 1910 Flint founded the TRC-“Time Recording Company” producing industrial time clocks. After some mergers, Flint and George W. Fairchild renamed the TRC as ITRC-“International Time Recording Co” - the selling agency of the BMC-“Bundy Manufacturing Company”.

In parallel, Herman Hollerith founded in 1896 and operated the TMC-“Tabulating Machine Company” which produced tabulating machines using punched-cards.

In 1911, Flint and Hollerith merged the CSCA, ITRC, TMC and BMC into the C-T-R.-“Computing-Tabulating Recording Co.” Flint became the first president of the C-T-R. Co. Initially, Flint, Fairchild and Hollerith remained members of the Board of Directors and the first two are still mentioned in your picture dated December 1917. Hollerith remained chief consulting engineer with the C-T-R Co. until he left it in 1921.

C-T-R Co had offices and plants in Endicott and Binghamton, NY; Washington, D.C.; Dayton, OH; Detroit, MI; and Toronto, Ontario.

In May 1914, Flint hired Thomas J. Watson Senior as General Manager, who became in less than one year the C-T-R President.

Watson who previously was the NCR General Sales Manager, and Vice-President, will transform C-T-R Co under his famous motto “THINK” in the most powerful company offering large-scale, custom-built tabulating machines & solutions for client business.

In 1924, on his proposal C.T.R. Co. changed its name to IBM - “International Business Machines”.

The posted C-T-R Co. organizational chart is demonstrating the early company interest for the company sites composite OBS as a dashboard. Later, after forty years the OBS started to be merged with the WBS resulting in the RAM chart.

¹ The organisation chart above is part of our research into the origins of the WBS. To read more and download a full size version see: <https://mosaicprojects.com.au/PMKI-ZSY-020.php#WBS>

First Published 28 January 2020



**Downloaded from Mosaic's PMKI
Free Library.**

For more papers focused on *PM History* see:
<https://mosaicprojects.com.au/PMKI-ZSY.php>

Or visit our PMKI home page at:
<https://mosaicprojects.com.au/PMKI.php>



Creative Commons Attribution 3.0 Unported License.

Attribution: Mosaic Project Services Pty Ltd, downloaded from
<https://mosaicprojects.com.au/PMKI.php>